

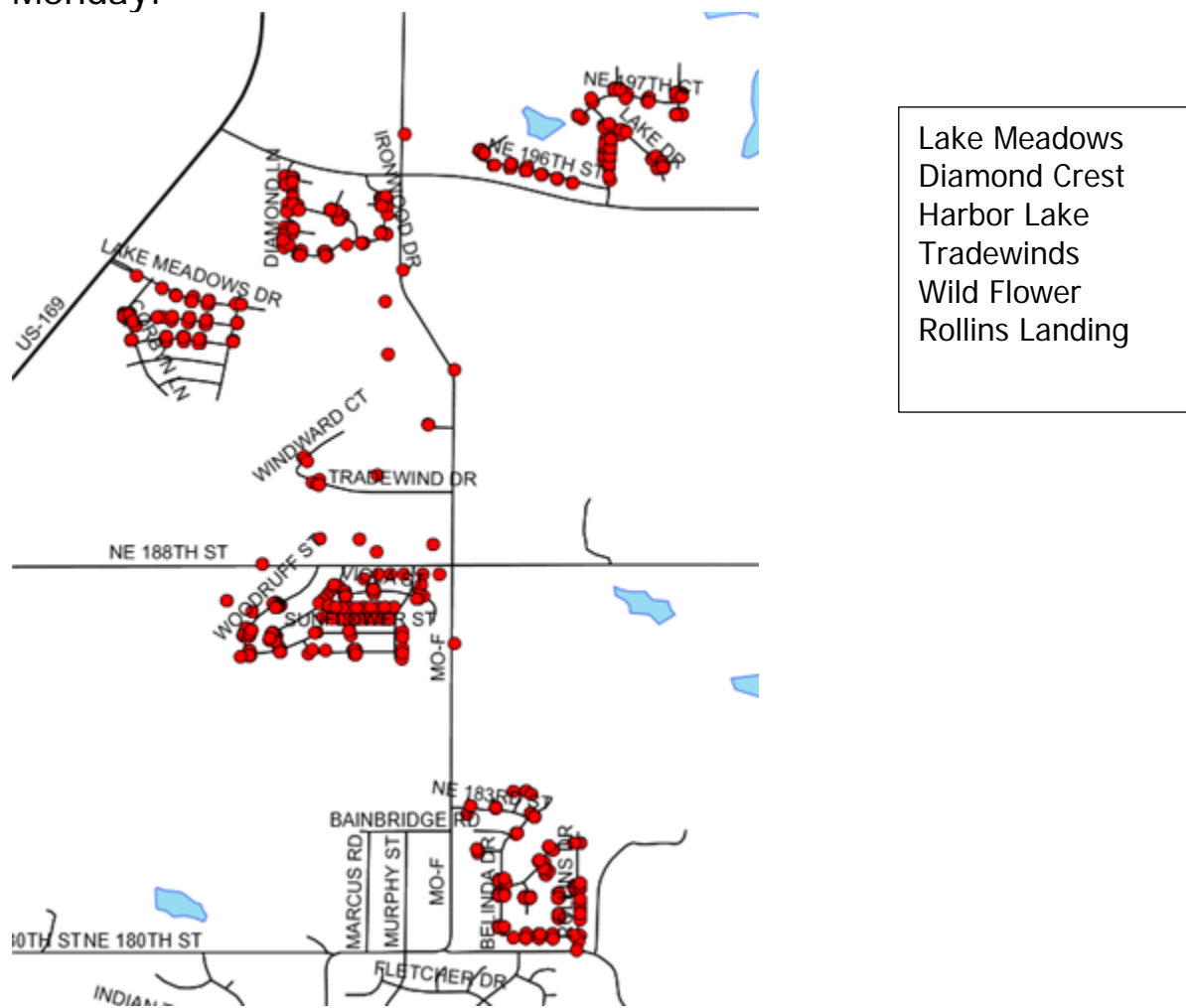
Trash & recycling pick-up routes

The contract with WCA for residential solid waste collection was effective January 1, 2017. Residents **MUST** use the WCA containers for all trash and recycling. Containers should be positioned at the curb with the pushing handle away from the street, and should be three feet away from mailboxes, vehicles, other waste containers or other obstacles (or at each side of the driveway). This allows the lifting arm of the truck room to get the container picked up and dumped into the truck.

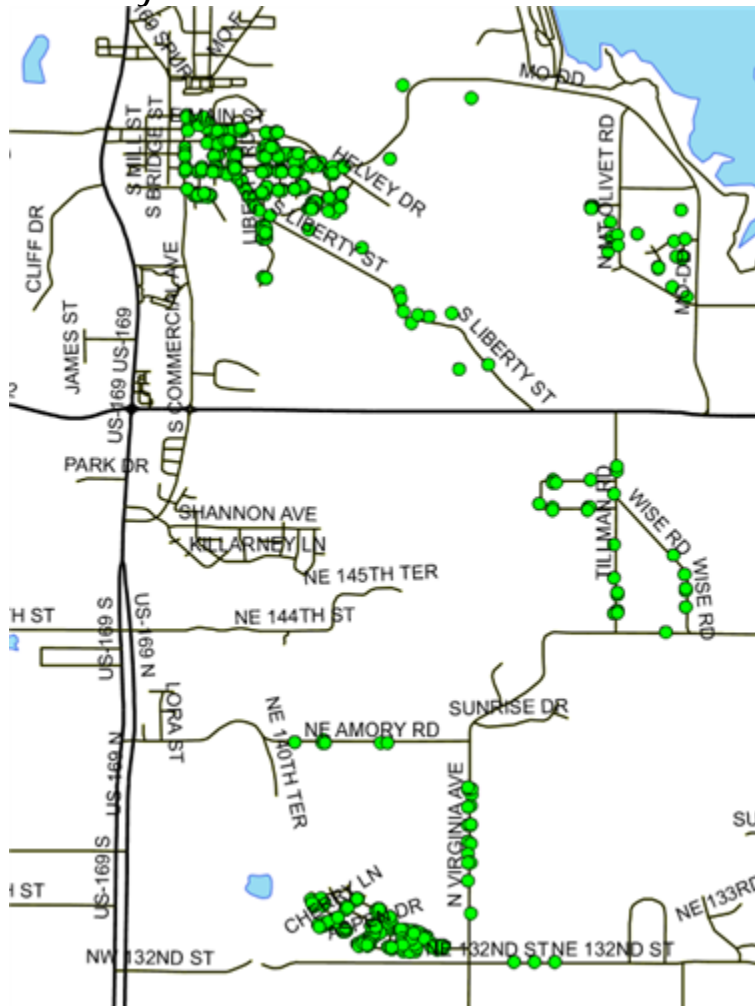
Containers should be at the curb by 6:30 AM on the day of service. All trash & recycling must be in the containers provided, "extra" bags will not be picked up.

Please see the routes below to determine your trash & recycling day:

Monday:

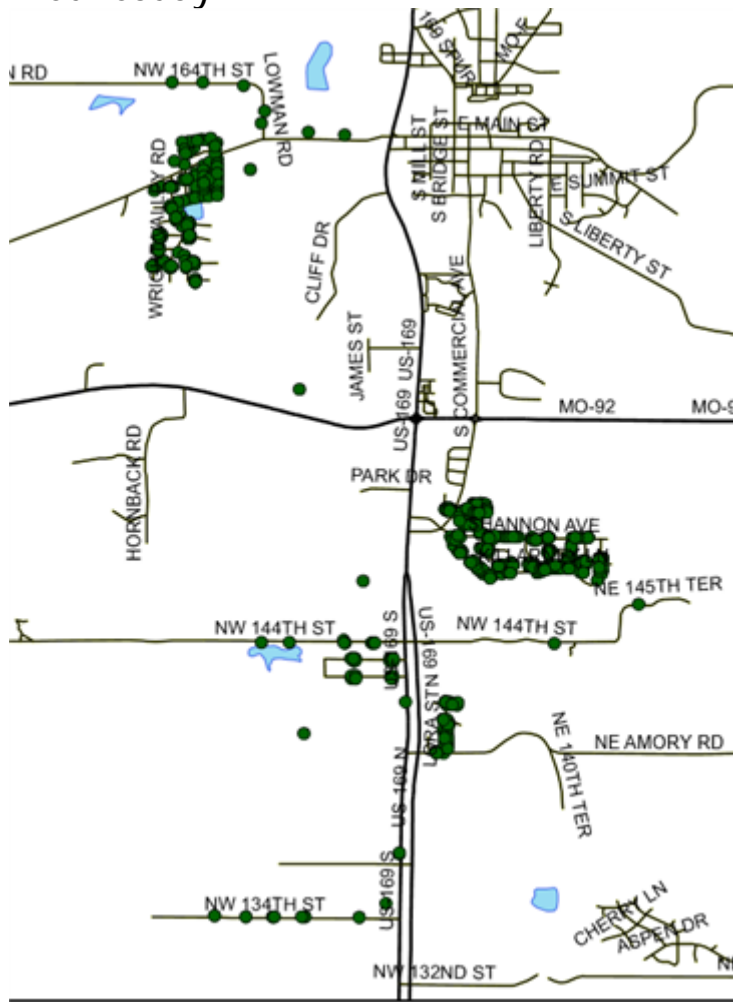


Tuesday:



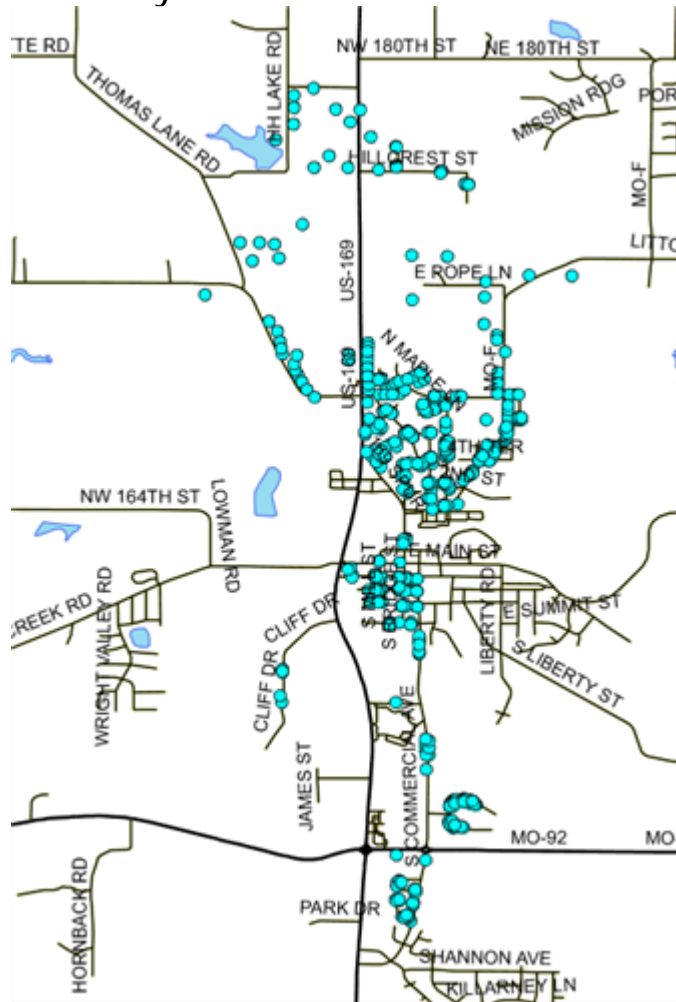
Forest Oaks
N. Virginia
Tillman & Wise Roads
Liberty Road
Liberty Street
Lakeside Crossing
Old Smithville East of Commercial
& South of the river

Wednesday:



Woods Court
134th Street
Hills of Shannon
Barton Heights
Cedar Lakes
Lowman Road
Ashmont

Thursday:



Emerald Ridge
Stonebridge
Commercial Street
Downtown Smithville West of
Commercial
Old Smithville North of the river
Old Jefferson Hwy
Pope Lane
Hillcrest Subdivision
KK Hwy
Cliff Drive